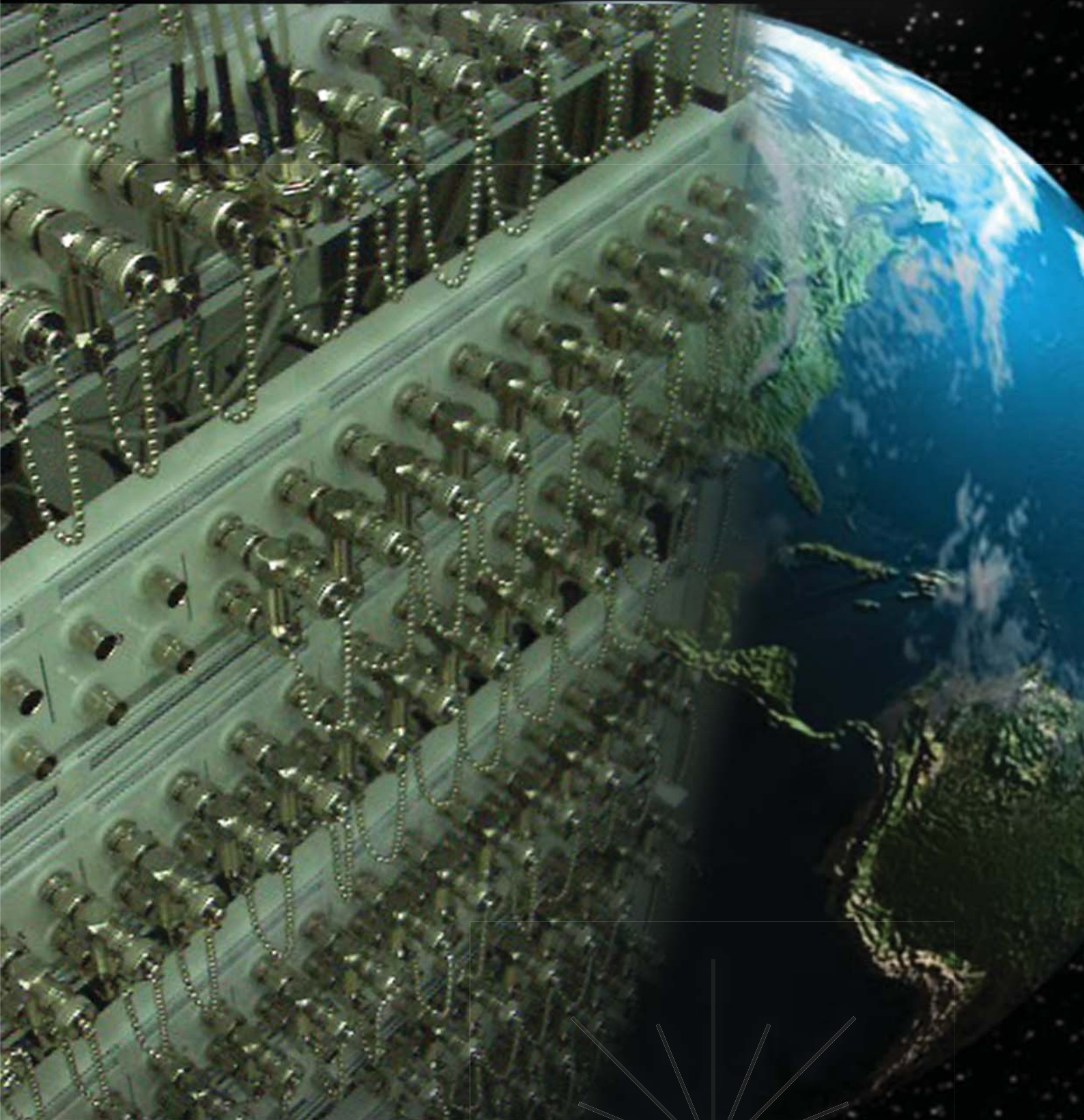


BNC-DDF

Digital Distribution Frame



Litech®

www.litech.cc

75 Ohm Digital Distribution Frame is designed for coaxial cable termination and cross connection in between transmission equipments in fixed or mobile network. DDF are normally installed in for interconnection, cross connection or traffic monitoring with proper cable management.

Litech BNC-DDF is a high density digital distribution frame design to accommodate high capacity of cross connection requirement in exchanges, MSC, BSC or RBS, when space is constrained. Litech BNC-DDF are designed to use with most commonly used BNC connector.



BNC Panel



64 Port BNC (Fixed Type)



32 Port BNC (Fixed Type)



32 Port BNC (Swing Out)



32 Port Flip Down Type



32 Port BNC c/w Cable Holder

Ordering Information

Part Number	Description
LTCF-B32-CM-SO	19" Rack Mount 32 Port BNC Panel (Swing Out Type)
LTCF-B64-CM-SO	19" Rack Mount 64 Port BNC Panel (Swing Out Type)
LTCF-B32-FD	19" Rack Mount 32 Port BNC Panel (Flip Down Type)
LTCF-B64-FD	19" Rack Mount 64 Port BNC Panel (Flip Down Type)
LTCF-B32-P	19" Rack Mount 32 Port BNC Panel (Fix Type)
LTCF-B64-P	19" Rack Mount 64 Port BNC Panel (Fix Type)
LTCF-B32-CM	19" Rack Mount 32 Port BNC Panel (Cable Holder Type)
LTCF-B64-CM	19" Rack Mount 64 Port BNC Panel (Cable Holder Type)

Connectors



BNC Straight Male Crimp



BNC Straight Female-Female Adapter (Plastic Isolator)



BNC U Link With Monitoring Port



BNC Straight Female-Female Adapter

Ordering Information

Part Number	Description
LTCN-301M-XX	BNC Straight Male Crimp
LTCN-308H-MMM	BNC U Link With Monitoring Port
LTCN-309-FF(P)	BNC Straight Female-Female Adapter (Plastic Isolator)
LTCN-309-FF	BNC Straight Female-Female Adapter

Pre-terminated Jumper



Ordering Information

Part Number	Description
LJCB-X-Y-C-L	Coaxial Jumper

Coaxial Cables



Ordering Information

Part Number	Description
LTCO-TLBX-CP	Singlecore 2.5C2V
LTCO-TLTE-FS-T	8 core 2.5C2V
LTSCO-TL-BS	Singlecore 3C2V
LTCO-TLTE-FS-SD	Singlecore BT3002
LTCO-TLTE-STOU	8 core BT3002
LTCO-TLTE-STOU	Singlecore BT2003

75 ohm to 120 ohm Balun

120 Ohms link is made possible by using 75 Ohm to 120 Ohm balun. Balun is a media converter for 2Mbit link which allow a unbalanced 75Ohm coaxial interface equipment to operate over balanced 120Ohm twisted pair cables, or visa versa. Litech offers 1.6/5.6 balun with IDC punch down or wire wrap design to allow connection to DDF panel, offering flexibility in different impedance cable to be used on the same DDF frame.



Coaxial Balun BNC Straight Male to Wire Wrap



Coaxial Balun BNC Straight Male to IDC 3 Pole

Ordering Information

Part Number	Description
LTBL-IDC-3SM-W2P	Coaxial Balun BNC Straight Male to Wire Wrap
LTBL-IDC-3SM-3P	Coaxial Balun BNC Straight Male to IDC 3 Pole



Advanced Network Solutions Sdn Bhd
(353240-A)

No. 33 & 35, Jalan TPJ 6, Taman Perindustrian Jaya,
47200 Subang, Petaling Jaya, Selangor, Malaysia.

Tel : 603-78456133 Fax : 603-78455133

E-mail : advancednet@po.jaring.my

www.litech.cc



E198559



SIRIM
Approved



ISO 9001 : 2000



039

TOTAL TELECOMMUNICATION & NETWORKING SOLUTIONS